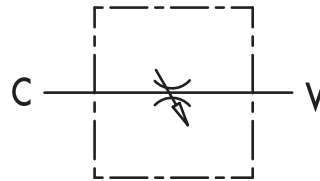
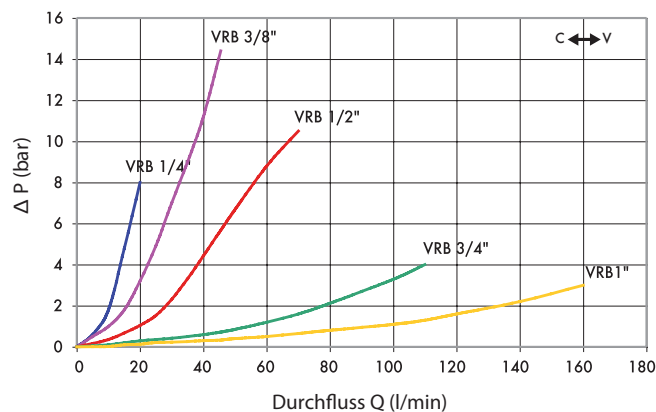


Drosselventil

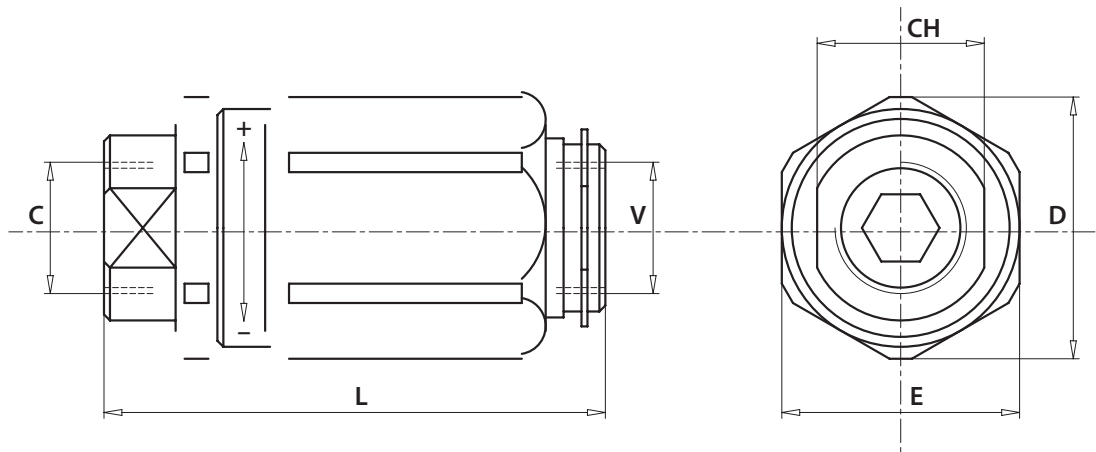
Typ VRB



Druckabfall (Öltemperatur: 50 °C/Ölviskosität: 30 cSt)



Code	Typ	max. Durchfluss (l/min)	max. Arbeitsdruck (bar)
V0545	VRB 1/4"	20	300
V0555	VRB 3/8"	45	300
V0565	VRB 1/2"	70	300
V0575	VRB 3/4"	110	250
V0585	VRB 1"	160	250



Code	Typ	V - C	L (mm)	L1 (mm)	CH (mm)	D (mm)	Gewicht (kg)
V0545	VRB 1/4"	G 1/4"	66.5	30	19	34	0.266
V0555	VRB 3/8"	G 3/8"	73	32	24	36	0.312
V0565	VRB 1/2"	G 1/2"	80	38	27	42	0.456
V0575	VRB 3/4"	G 3/4"	95	46	32	51	0.784
V0585	VRB 1"	G 1"	109	55	41	60	1.222